



SECRET - DCS WORLD
REL TO COALITION

TARGET FOLDER

AFHR001

HERAT TALIBAN COMMUNICATION CENTER, AF

SECRET - DCS WORLD
REL TO COALITION



HERAT TALIBAN COMMUNICATION CENTER, AF JOINT OPERATIONS GRAPHIC 1/1

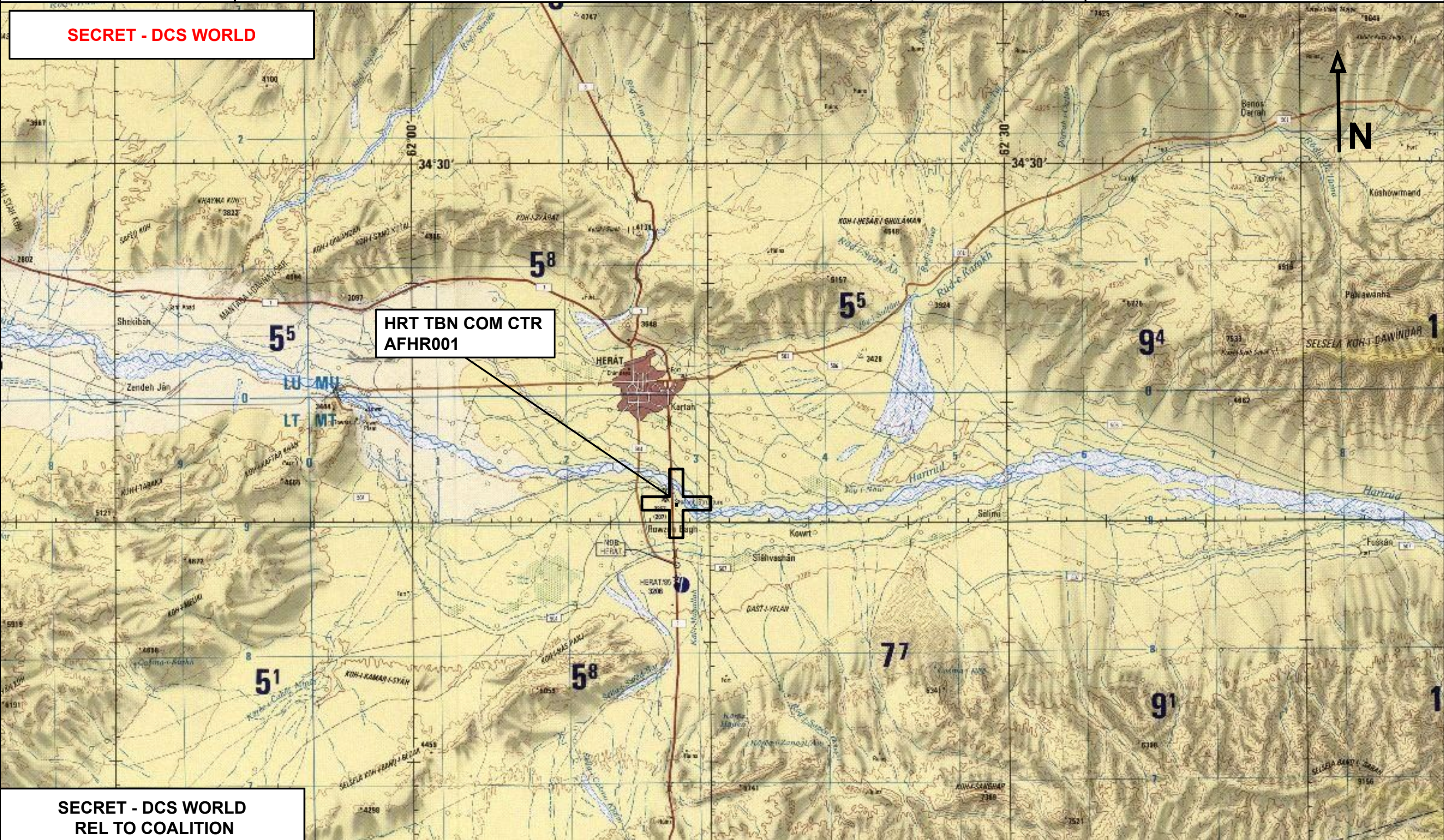
BE: AFHR001 CATCODE: 41
MIDB GEOS: 34 15.993 N 062 13.357 E
ICOD: 07OCT2001 DOI: 18SEP2001



SECRET - DCS WORLD
REL TO COALITION

DECL ON: 20511007 (+50 YEARS)

SECRET - DCS WORLD



HRT TBN COM CTR
AFHR001

SECRET - DCS WORLD
REL TO COALITION



HERAT TALIBAN COMMUNICATION CENTER, AF
ORIENTATION VIEW GRAPHIC 1/1

BE: AFHR001 CATCODE: 41
MIDB GEOS: 34 15.993 N 062 13.357 E
ICOD: 07OCT2001 DOI: 18SEP2001

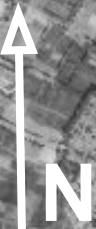


SECRET - DCS WORLD
REL TO COALITION

DECL ON: 20511007 (+50 YEARS)

SECRET - DCS WORLD

HRT TBN COM CTR
AFHR001



SECRET - DCS WORLD
REL TO COALITION

— INSTALLATION OUTLINE
— FACILITY OUTLINE



**HERAT TALIBAN COMMUNICATION CENTER, AF
FACILITY OUTLINE GRAPHIC 1/1**

**BE: AFHR001 CATCODE: 41
MIDB GEOS: 34 15.993 N 062 13.357 E
ICOD: 07OCT2001 DOI: 18SEP2001**



**SECRET - DCS WORLD
REL TO COALITION**

DECL ON: 20511007 (+50 YEARS)

SECRET - DCS WORLD



**SECRET - DCS WORLD
REL TO COALITION**



HERAT TALIBAN COMMUNICATION CENTER, AF
CRITICAL ELEMENT GRAPHIC 1/1

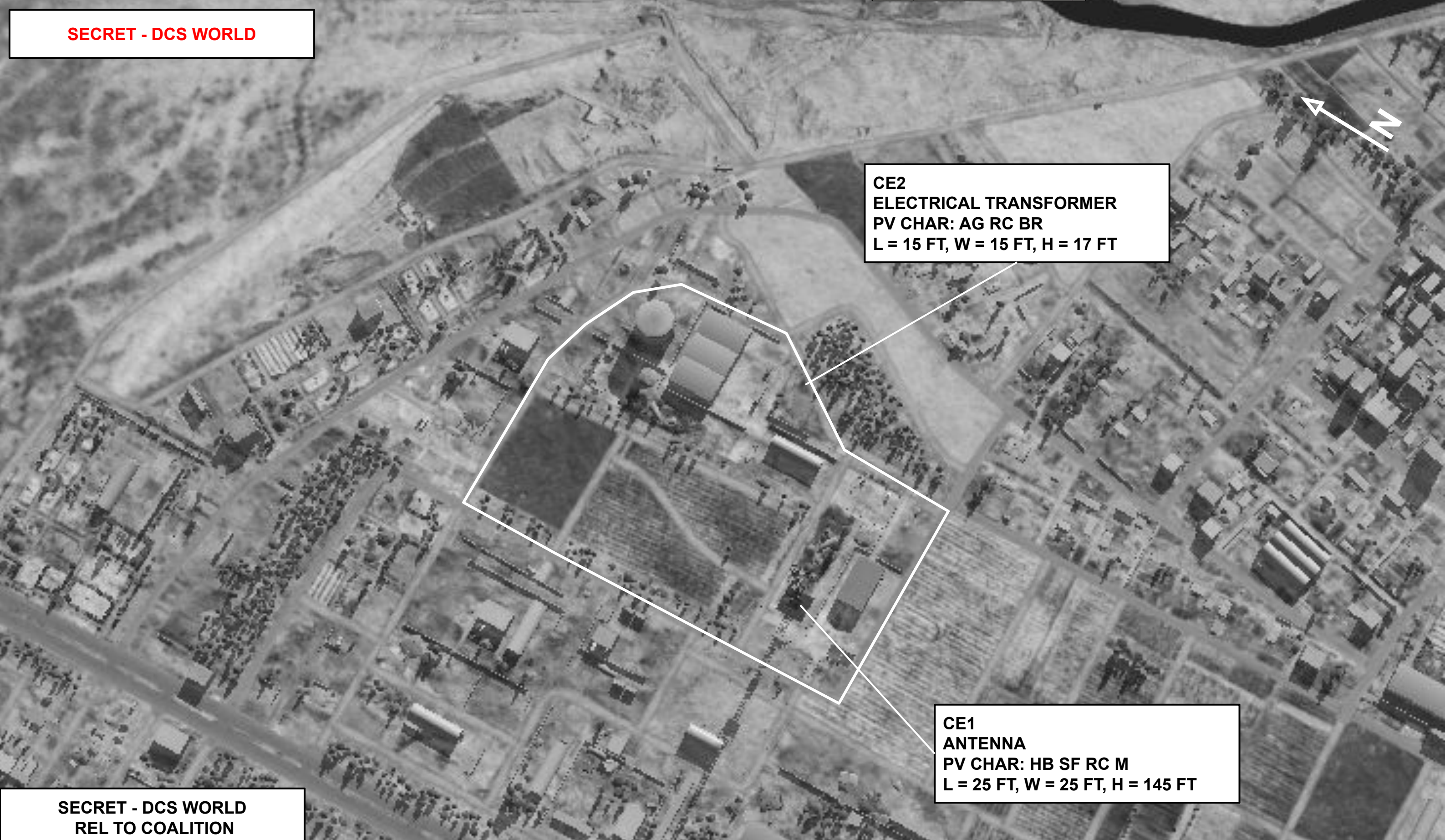
BE: AFHR001 CATCODE: 41
MIDB GEOS: 34 15.993 N 062 13.357 E
ICOD: 07OCT2001 DOI: 18SEP2001



SECRET - DCS WORLD
REL TO COALITION

DECL ON: 20511007 (+50 YEARS)

SECRET - DCS WORLD



CE2
ELECTRICAL TRANSFORMER
PV CHAR: AG RC BR
L = 15 FT, W = 15 FT, H = 17 FT

CE1
ANTENNA
PV CHAR: HB SF RC M
L = 25 FT, W = 25 FT, H = 145 FT

SECRET - DCS WORLD
REL TO COALITION



HERAT TALIBAN COMMUNICATION CENTER, AF
JOINT DESIRED POINT OF IMPACT GRAPHIC 1/1

BE: AFHR001 CATCODE: 41
MIDB GEOS: 34 15.993 N 062 13.357 E
ICOD: 07OCT2001 DOI: 18SEP2001



SECRET - DCS WORLD
REL TO COALITION

DECL ON: 20511007 (+50 YEARS)

SECRET - DCS WORLD

JDPI: AT00111
RDO COMM TWR
34 15 56.76 N 062 13 19.62 E
34 15.9460 N 062 13.3271 E
JDPI MSL: 3087 FT
FEAT HGT: 145 FT
JDPI AGL: 13 FT
CE 90: 115 FT / LE90: 130 FT

JDPI: AT00121
WRH 1 GND
34 15 55.5 N 062 13 20.82 E
34 15.9251 N 062 13.3472E
JDPI MSL: 3071 FT
FEAT HGT: 17 FT
JDPI AGL: 0 FT
CE 90: 115 FT / LE90: 130 FT

JDPI: AT00131
WRH 2 GND
34 15 58.26 N 062 13 22.92 E
34 15.9715 N 062 13.3820 E
JDPI MSL: 3071 FT
FEAT HGT: 17 FT
JDPI AGL: 0 FT
CE 90: 115 FT / LE90: 130 FT

JDPI: AT00141
ELEC TRAN GND
34 15 59.10 N 062 13 24.66 E
34 15.9853 N E 062 13.4112 E
JDPI MSL: 3071 FT
FEAT HGT: 17 FT
JDPI AGL: 0 FT
CE 90: 115 FT / LE90: 130 FT

JDPI: AT00151
SPT BLDG GND E
34 16 00.90 N 062 13 24.78 E
34 16.0150 N 062 13.4132 E
JDPI MSL: 3058 FT
FEAT HGT: 30 FT
JDPI AGL: 0 FT
CE 90: 115 FT / LE90: 130 FT

JDPI: AT00152
SPT BLDG GND W
34 16 00.91 N 062 13 23.40 E
34 16.0152 N 062 13.3901 E
JDPI MSL: 3058 FT
FEAT HGT: 30 FT
JDPI AGL: 0 FT
CE 90: 115 FT / LE90: 130 FT

JDPI: AT00161
FUEL TK TOP
34 16 02.22 N 062 13 24.12 E
34 16.0373 N 062 13.4020 E
JDPI MSL: 3120 FT
FEAT HGT: 65 FT
JDPI AGL: 65 FT
CE 90: 115 FT / LE90: 130 FT

SECRET - DCS WORLD
REL TO COALITION



HERAT TALIBAN COMMUNICATION CENTER, AF
WEAPONEERING OPTIONS 1/1

BE: AFHR001 CATCODE: 41
MIDB GEOS: 34 15.993 N 062 13.357 E
ICOD: 07OCT2001 DOI: 18SEP2001



SECRET - DCS WORLD
REL TO COALITION

DECL ON: 20511007 (+50 YEARS)

SECRET - DCS WORLD

| JDPI | DESCRIPTION | TLE | WARHEAD | GUIDANCE | DESIRED EFFECT | IMPACT ANGLE | FUZING |
|---------|----------------------------|--------|-------------|------------|----------------------|--------------|--------|
| AT00111 | RADIO COMMUNICATION TOWER | CAT IV | 500 lbs GP | METRIC | BLAST, FRAGMENTATION | 60 - 90° | 0 ms |
| AT00121 | WAREHOUSE 1 GND | CAT IV | 500 lbs GP | DECAMETRIC | BLAST, FRAGMENTATION | 60 - 90° | 10 ms |
| AT00131 | WAREHOUSE 2 GND | CAT IV | 500 lbs GP | DECAMETRIC | BLAST, FRAGMENTATION | 60 - 90° | 10 ms |
| AT00141 | ELECTRICAL TRANSFORMER GND | CAT IV | 500 lbs GP | METRIC | BLAST, FRAGMENTATION | 60 - 90° | 10 ms |
| AT00151 | SUPPORT BUILDING EAST GND | CAT IV | 1000 lbs GP | DECAMETRIC | BLAST, FRAGMENTATION | 60 - 90° | 25 ms |
| AT00152 | SUPPORT BUILDING WEST GND | CAT IV | 1000 lbs GP | DECAMETRIC | BLAST, FRAGMENTATION | 60 - 90° | 25 ms |
| AT00161 | FUEL TANK TOP | CAT IV | 500 lbs GP | METRIC | BLAST, FRAGMENTATION | 60 - 90° | 0 ms |

SECRET - DCS WORLD
REL TO COALITION



HERAT TALIBAN COMMUNICATION CENTER, AF
COLLATERAL DAMAGE ESTIMATION GRAPHIC 1/2

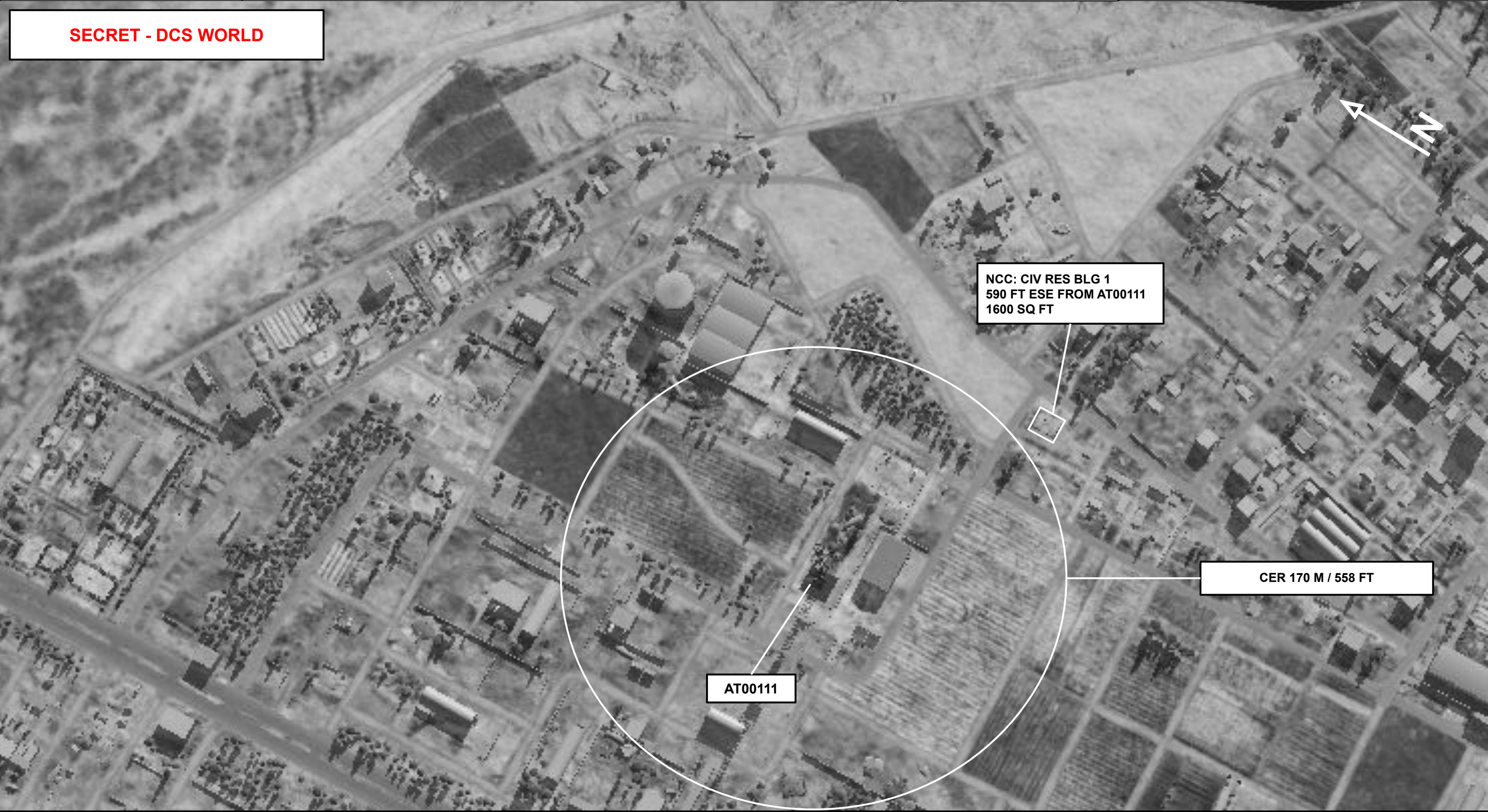
BE: AFHR001 CATCODE: 41
MIDB GEOS: 34 15.993 N 062 13.357 E
ICOD: 07OCT2001 DOI: 18SEP2001



SECRET - DCS WORLD
REL TO COALITION

DECL ON: 20511007 (+50 YEARS)

SECRET - DCS WORLD



NCC: CIV RES BLG 1
590 FT ESE FROM AT00111
1600 SQ FT

CER 170 M / 558 FT

AT00111

SECRET - DCS WORLD
REL TO COALITION

NOT DUAL USE: CDE 2 LOW, PGM, UNITARY



HERAT TALIBAN COMMUNICATION CENTER, AF
COLLATERAL DAMAGE ESTIMATION GRAPHIC 2/2

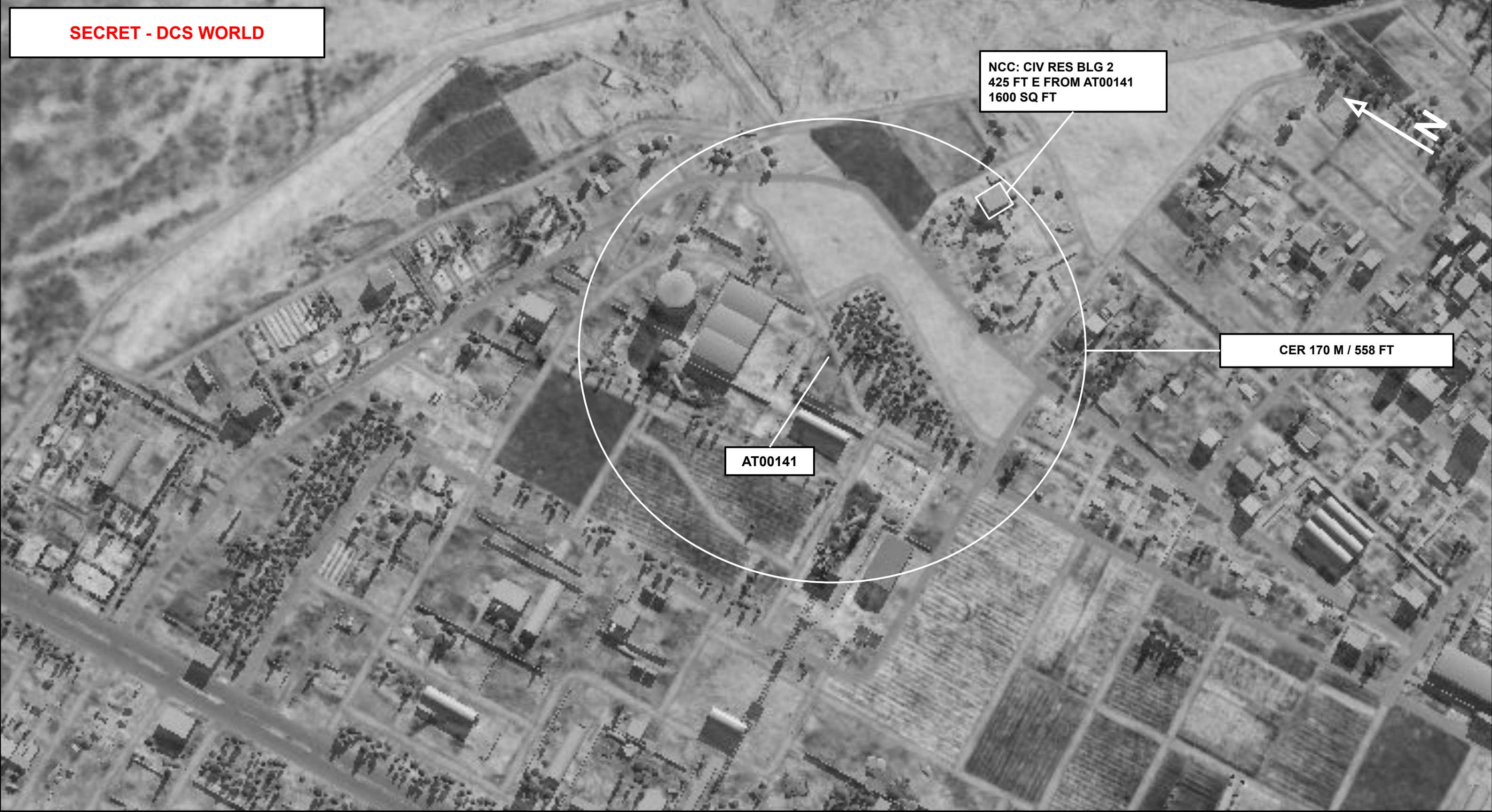
BE: AFHR001 CATCODE: 41
MIDB GEOS: 34 15.993 N 062 13.357 E
ICOD: 07OCT2001 DOI: 18SEP2001



SECRET - DCS WORLD
REL TO COALITION

DECL ON: 20511007 (+50 YEARS)

SECRET - DCS WORLD



SECRET - DCS WORLD
REL TO COALITION

NOT DUAL USE: CDE 3 LOW, PGM, UNITARY, FUZING



HERAT TALIBAN COMMUNICATION CENTER, AF
COLLATERAL DAMAGES ESTIMATION 1/1

BE: AFHR001 CATCODE: 41
MIDB GEOS: 34 15.993 N 062 13.357 E
ICOD: 07OCT2001 DOI: 18SEP2001



SECRET - DCS WORLD
REL TO COALITION

DECL ON: 20511007 (+50 YEARS)

SECRET - DCS WORLD

COLLATERAL DAMAGES WITHIN A 500M RADIUS

| DESCRIPTION | CATCODE | MIDB GEOS | LOCATION | REMARKS |
|---------------------------------|---------|--------------------------|--------------------------|---|
| CIVILIAN RESIDENTIAL BUILDING 1 | N/A | 34 15.910 N 062 13.436 E | 110°/590 FT FROM AT00111 | INHABITED - EVIDENCE OF RECENT ACTIVITY |
| CIVILIAN RESIDENTIAL BUILDING 2 | N/A | 34 15.977 N 062 13.495 E | 090°/425 FT FROM AT00141 | INHABITED - EVIDENCE OF RECENT ACTIVITY |

NO STRIKE ENTITIES WITHIN A 500M RADIUS

| NSE ID | DESCRIPTION | CATCODE | MIDB GEOS | LOCATION | REMARKS |
|--------|-------------|---------|-----------|----------|---------|
| N/A | N/A | N/A | N/A | N/A | N/A |

SECRET - DCS WORLD
REL TO COALITION



ACRONYMS

| ACRONYM | MEANING | DEFINITION |
|---------|---------------------------------------|--|
| BE | Basic Encyclopedia Number | Alpha/numeric code unique to an installation for incorporation within various national and tactical systems. |
| CATCODE | Category Code | The data Element that classifies the function and purpose of an installation or a facility. |
| MIDB | Modernized Integrated Database | A database comprised of information on facilities of military significance, military forces, and related equipment. |
| ICOD | Intelligence Cutoff Date | The date of the latest intelligence data inputted to a feature. |
| DOI | Date of Image | Date on which a geospatial or intelligence-related image was captured. |
| CE | Critical Element | An element of an entity or object that enables it to perform its primary function. |
| PV CHAR | Physical Vulnerability Characteristic | Standardized alphanumeric code describing the physical and structural properties of a target. |
| JDPI | Joint Desired Point of Impact | A unique, alphanumeric coded aimpoint identified by a three dimensional mensurated point. It represents a weapon or capability desired point of impact or penetration. |
| CE90 | Circular Error at 90% | 90 percent confidence level in the horizontal plane. |
| LE90 | Linear Error at 90% | 90 percent confidence level in the vertical dimension |
| MSL | Mean Sea Level | Elevation above Earth reference geoid. |
| AGL | Above Ground Level | Elevation above ground surface. |
| NCC | Nearest Collateral Concern | Closest non-targeted structure, area, or entity near a planned point of impact that may be at risk of unintended damage during a military strike. |
| CER | Collateral effects radius | Radius within which collateral damage might happen based on the weapon's characteristics, the target environment, and other operational factors. |
| CDE | Collateral damage estimate | Systematic process used in military targeting to evaluate the potential for unintended damage or harm to non-combatant entities, structures, or personnel as a result of a planned strike. |
| PGM | Precision guided munition | Advanced weapon designed to accurately hit specific target using various guidance systems (GPS, LASER, IR, etc...) to adjust their trajectory mid-flight. |



MILITARY KILL EFFECTS

Definition: destructive effects available upon detonation of a weapon.

| KILL EFFECT | DEFINITION |
|-------------------|--|
| BLAST | The high-pressure shockwave created by an explosion, traveling outward from the detonation point. Blast effects cause destruction by overpressure (compression force) and dynamic pressure (wind generated by the expanding gases), which can demolish structures, damage equipment, and injure personnel. |
| FRAGMENTATION | The dispersal of shrapnel or debris from an exploding munition. Fragments are propelled outward at high velocity, targeting personnel, equipment, and light structures in the area of effect. |
| PENETRATION | The effect of a munition or projectile piercing a target's surface without fully passing through it. Penetration is often used to defeat hardened targets, such as bunkers, by transferring energy into the target's structural layers. |
| INCENDIARY | The combustion of materials caused by incendiary munitions, secondary explosions, or the heat from a blast. Fire destroys flammable materials and can cause secondary damage to structures and equipment, as well as injuries to personnel. |
| CRATERING | The formation of a crater in the ground caused by the impact or detonation of a munition. Cratering disrupts mobility and operations, damaging roads, runways, or creating obstacles in the battlefield. |
| PERFORATION | The complete passage of a munition or projectile through a target, creating both an entry and exit point. Perforation may reduce the energy transfer to the target, making it less effective for destroying heavily armored or reinforced structures. |
| EARTH SHOCK | The seismic-like vibrations transmitted through the ground from an explosion. Earth shock can damage underground structures, destabilize foundations, or incapacitate personnel in subterranean environments. |
| NUCLEAR RADIATION | The release of ionizing radiation (alpha, beta, gamma, and neutron particles) from a nuclear explosion. Nuclear radiation can cause immediate biological damage, long-term health effects, and contamination of the environment. |
| THERMAL RADIATION | The intense heat and light energy emitted by an explosion, especially in nuclear detonations. Thermal radiation causes burns, ignites materials, and can create secondary fires in the target area. |